

untitled 12

for Bass flute, contrabass, & piano;  
for Leanna, Sofia, & Lola

Sivan Silver-Swartz, 2026

BASS FLUTE & CONTRABASS: ♦ Non vibrato ♦ Each beamed grouping of notes is the length of a slow, long breath - for the flute, literally a breathing out, for the bass, like a breathing in. A slow breath but not artificially so - focused effort without exhaustion. ♦ Within each beamed grouping, the distribution of note lengths within it is up to you. The duration of each grouping is roughly the same, so the average note duration of a grouping with, eg., 3 notes, will be longer than a grouping with 6 notes. Take care to distribute the note length with thoughtful but subtle, if not witty, variety. - one note now a little longer, the next now a little shorter, though never in extreme. Also take care not to fall back on a rallantando gesture as your default distribution. ♦ Try to start/stop immediately after the other performer ends/begins, erring on the side of overlap rather than silence. ♦ Each beamed grouping goes from mp to pppp for flute, or pppp to mp for bass, however possible given the instruments' natural limitations - more an attempt

than something that could be strictly measured in decibels. ♦ The presence of a sharp or flat suggests a generally higher or lower pitch than equal temperament, respectively. (#=lower, b=higher - this tends to occur naturally for each instrument, given the bass flute's intonation & the contrabass's natural harmonics.) ♦ Note that contrabass is always in treble clef.

PIANO: ♦ Always sustaining, with a cloth or felt on the strings, perhaps combined with half-pedaling, to slightly dampen the sustain length. ♦ Within the duration established by the flute or bass, distribute the notes within your beamed grouping as you see fit in response to them, taking your very best care to avoid playing simultaneous attacks with the other instruments.

bass flute

(8)

*mp* *ppp*

(sim.)

piano

*ped. sempre* *p*

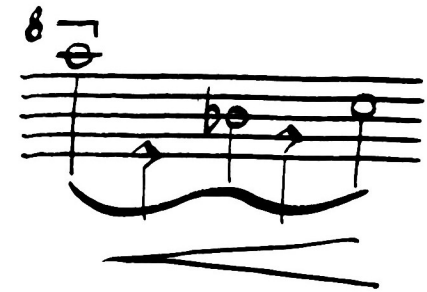
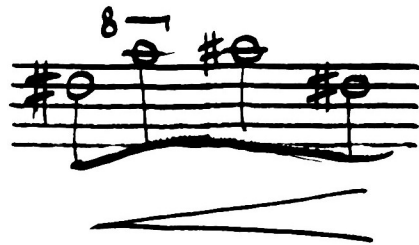
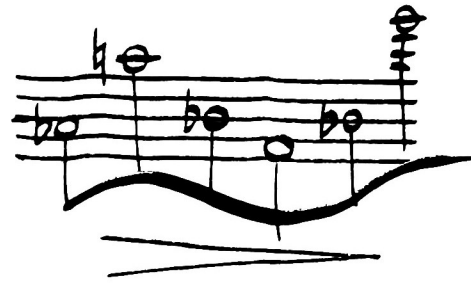
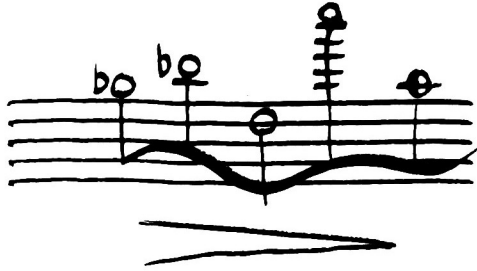
(sim.)

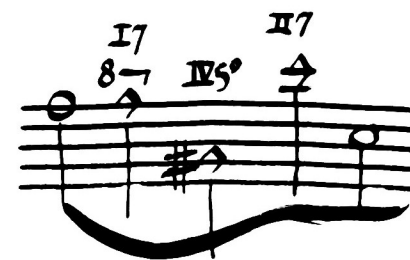
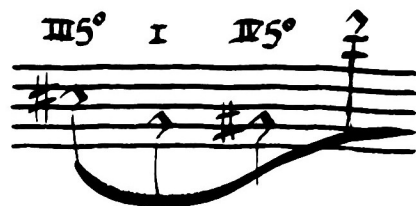
contra-bass

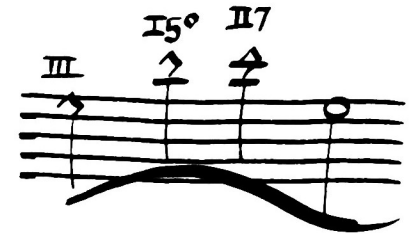
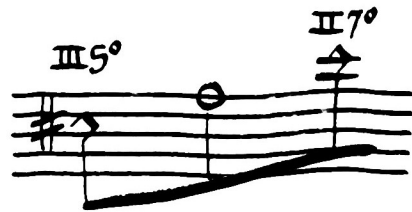
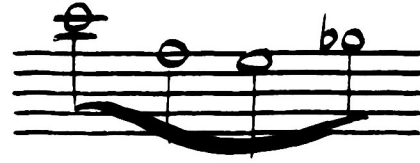
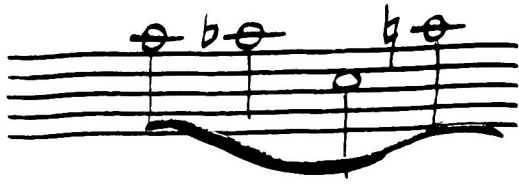
(8)

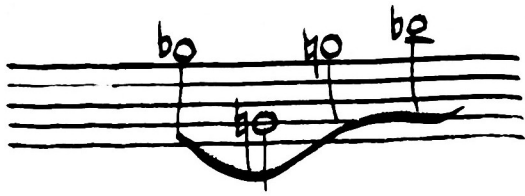
*ppp* *mp* 15°

(sim.) *mp* 15°







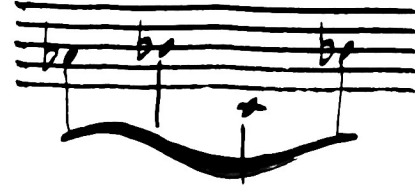


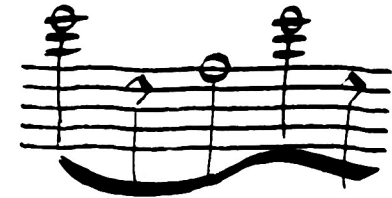
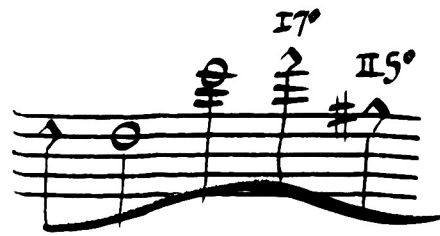
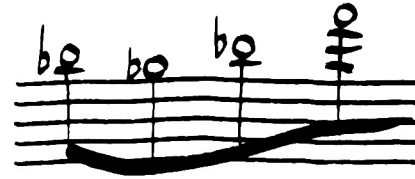
the length of a  
slow breath in,  
a la c.b.

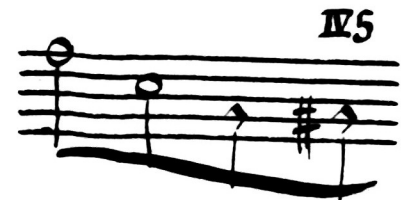
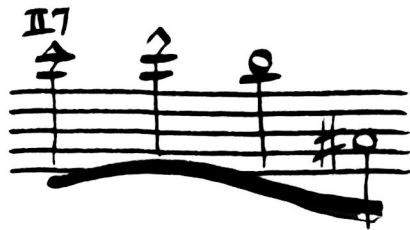
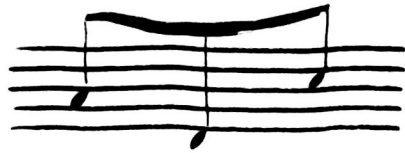
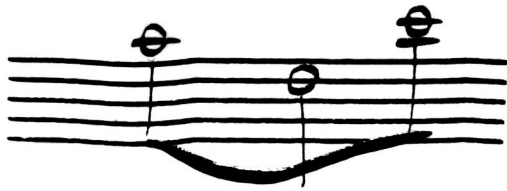


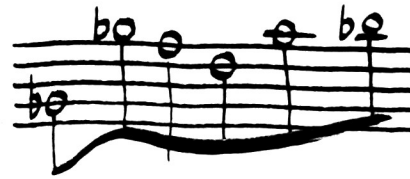
sim.











*sim. as  
before*

